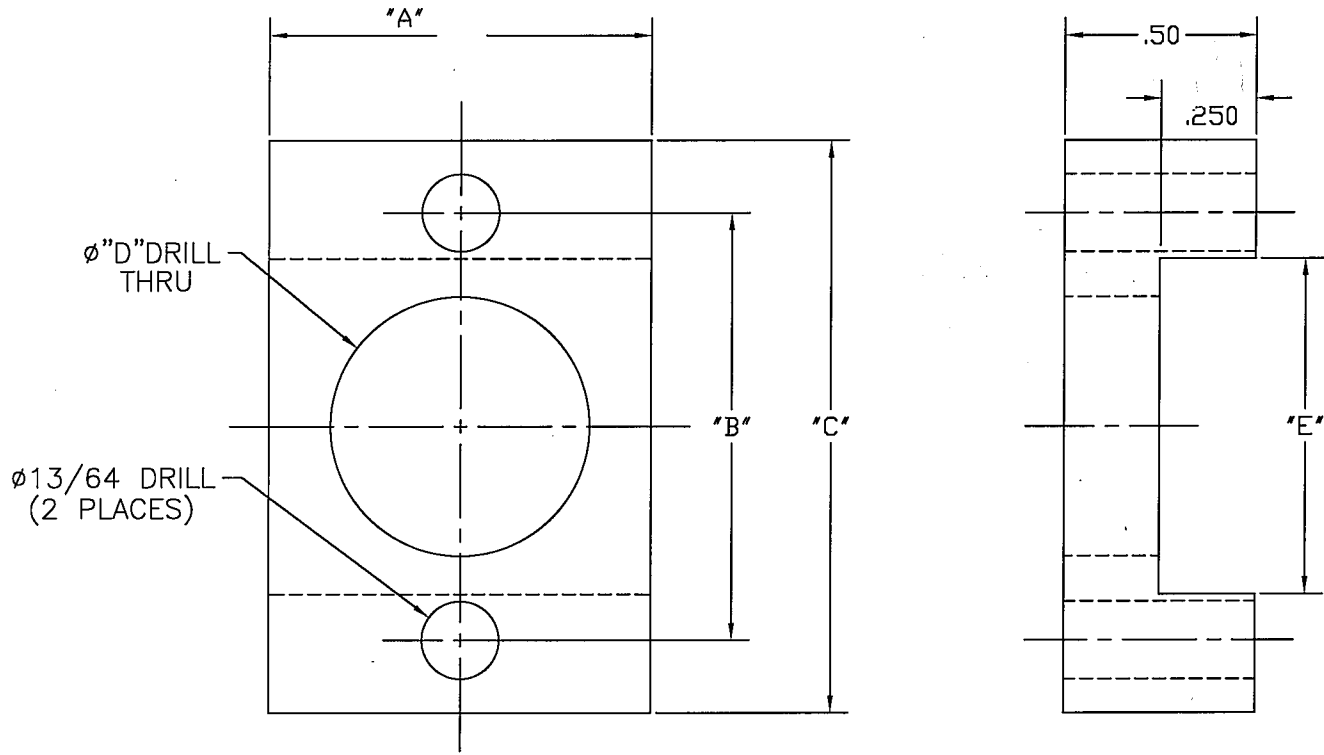


PART NO.  
SEE LEGEND

LETTER	DATE	REVISION	BY



EPIC MASTER  
DATE: 9-1-99

PART NO.	"A"	"B"	"C"	"D"	"E"
A075	.75	.93	1.25	.56	.56
A075A	.75	1.00	1.25	.56	.56
A076	1.00	1.12	1.50	.68	.81
A076B	1.00	1.12	1.50	.68	.88

EPIC MACHINE INC.  
201 INDUSTRIAL WAY  
FENTON, MI 48430  
(810) 629-9400

**E** EPIC MACHINE INC.  
FENTON, MI 48430

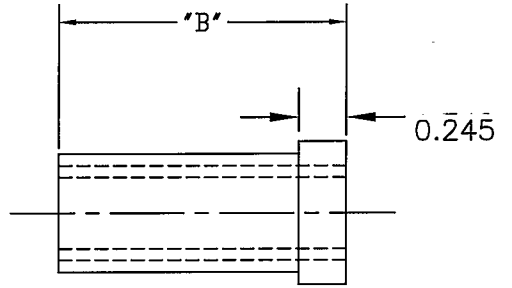
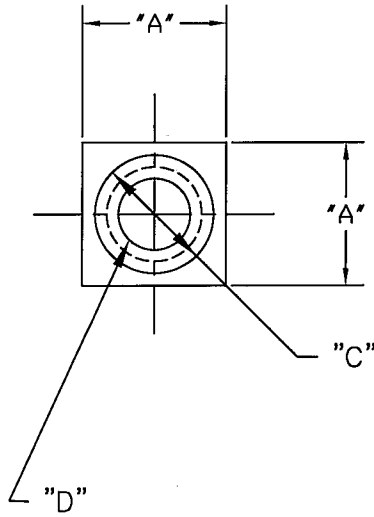
PART NAME  
PIN  
RETAINER/BASE

TOLERANCES UNLESS OTHERWISE SPECIFIED:		SHEET #	DWN.	CHKD.	SCALE	DATE
1 PLACE ± 0.3mm	1 PLACE ± 0.01	XX	RW	ES	FULL	7/28/97
2 PLACE ± 0.08mm	2 PLACE ± 0.003	SHEETS	PART NO.		FILE NO.	
3 PLACE ± 0.015mm	3 PLACE ± 0.0005	XX	SEE LEGEND		A076-B	

PART NO.  
SEE LEGEND

LETTER	DATE	REVISION	BY

PART NO.	"A" SQUARE	"B" LENGTH	"C" DIA	MAT'L	"D" TAP SIZE
A077/B/A	.75	.75	.62	BRASS	1/4-20
A077/B/B	.75	.75	.62	BRASS	5/16-18
A077/B/C	.75	.75	.62	BRASS	3/8-16
A077/B/D	.75	.75	.62	BRASS	1/2-13
A077/S/A	.75	.75	.62	STEEL	1/4-20
A077/S/B	.75	.75	.62	STEEL	5/16-18
A077/S/C	.75	.75	.62	STEEL	3/8-16
A077/S/D	.75	.75	.62	STEEL	1/2-13
A078/B/A	.50	.75	.50	BRASS	1/4-20
A078/B/B	.50	.75	.50	BRASS	5/16-18
A078/B/C	.50	.75	.50	BRASS	3/8-16
A078/S/A	.50	.75	.50	STEEL	1/4-20
A078/S/B	.50	.75	.50	STEEL	5/16-18
A078/S/C	.50	.75	.50	STEEL	3/8-16
A079/B/A	.50	.75	.50	BRASS	1/4-20
A079/B/B	.50	.75	.50	BRASS	5/16-18
A079/B/C	.50	.75	.50	BRASS	3/8-16
A079/S/A	.50	.75	.50	STEEL	1/4-20
A079/S/B	.50	.75	.50	STEEL	5/16-18
A079/S/C	.50	.75	.50	STEEL	3/8-16
A080/B/A	.75	1.50	.62	BRASS	1/4-20
A080/B/B	.75	1.50	.62	BRASS	5/16-18
A080/B/C	.75	1.50	.62	BRASS	3/8-16
A080/B/D	.75	1.50	.62	BRASS	1/2-13
A080/S/A	.75	1.50	.62	STEEL	1/4-20
A080/S/B	.75	1.50	.62	STEEL	5/16-18
A080/S/C	.75	1.50	.62	STEEL	3/8-16
A080/S/D	.75	1.50	.62	STEEL	1/2-13



EPIC MASTER  
DATE: 9-1-99

EPIC MACHINE INC.  
201 INDUSTRIAL WAY  
FENTON, MI 48430  
(810) 629-9400

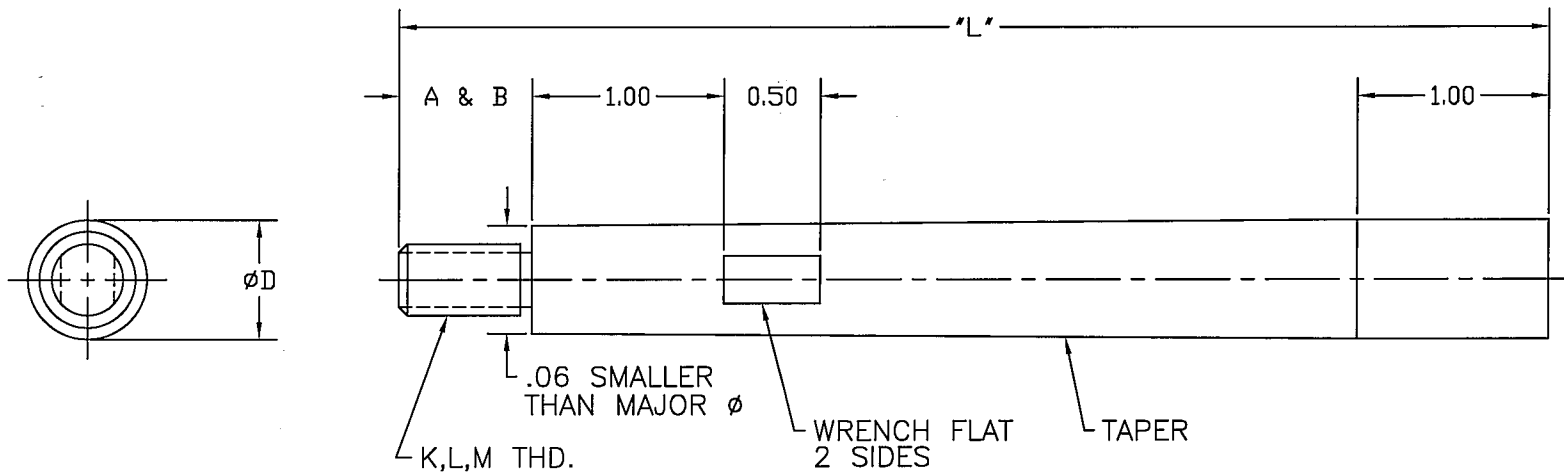
**E** EPIC MACHINE INC.  
FENTON, MI 48430

PART NAME  
PIN BASE  
STD.

TOLERANCES UNLESS OTHERWISE SPECIFIED:		SHEET #	DWN.	CHKD.	SCALE	DATE
1 PLACE ± 0.3mm	1 PLACE ± 0.01	1	RW	XX	FULL	8-15-96
2 PLACE ± 0.08mm	2 PLACE ± 0.003	SHEETS	PART NO.		FILE NO.	
3 PLACE ± 0.015mm	3 PLACE ± 0.0005	1	SEE LEGEND			A077

PART NO. A071 (A)

LETTER	DATE	REVISION	BY
A	11/18/99	CHANGED PART NO. FROM A071/A TO A071	RG



EPIC MACHINE INC.  
 201 INDUSTRIAL WAY  
 FENTON, MI 48430  
 (810) 629-9400

EPIC MASTER  
 DATE: 9-1-99

PIN DIAMETER	THREAD LENGTH		THREAD SIZE
	"A"	"B"	
1/4	.70	1.00	K
5/16	.70	1.00	K
5/16	.70	1.00	L
3/8	.70	1.00	K
3/8	.70	1.00	L
1/2	.70	1.00	K
1/2	.70	1.00	M
5/8	.70	1.00	M
5/8	.70	1.00	M

NOTE: WHEN ORDERING, SPECIFY ø, LENGTH, AND THREAD ø AND LENGTH.  
 EXAMPLE: 3/4 x 12.25 OAL

A=.70  
 B=1.00  
 K=1/4-20  
 L=5/16-18  
 M=3/8-16

<b>E</b> EPIC MACHINE INC. FENTON, MI 48430			
PART NAME STANDARD STRIPPER PINS			
DWN. RW	CHKD. DW	SCALE Full	DATE 8/1/97
PART NO. A071		FILE NO. A071	

(A)