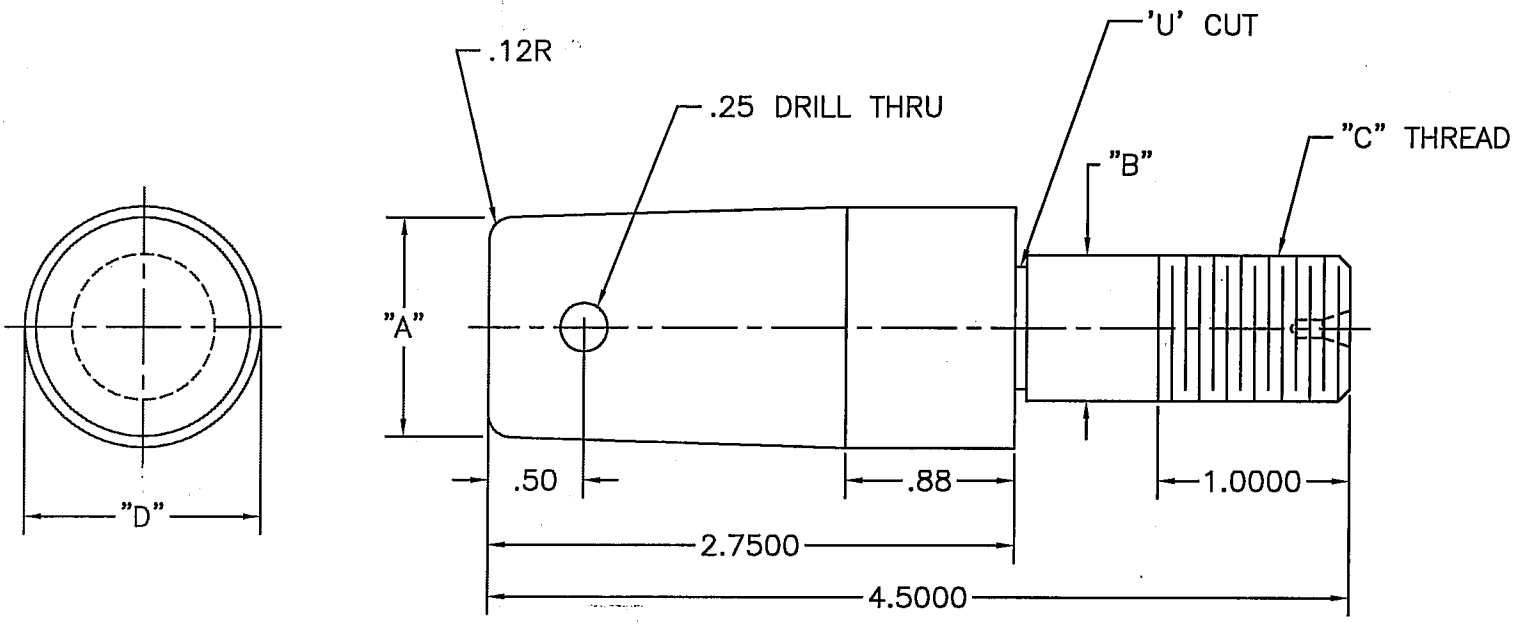


PART NO.  
SEE LEGEND

LETTER	DATE	REVISION	BY



EPIC MASTER  
DATE: 9-1-99

EPIC MACHINE INC.  
201 INDUSTRIAL WAY  
FENTON, MI 48430  
(810) 629-9400

HT: -58R<sub>c</sub>

HOT BOX

COLD BOX

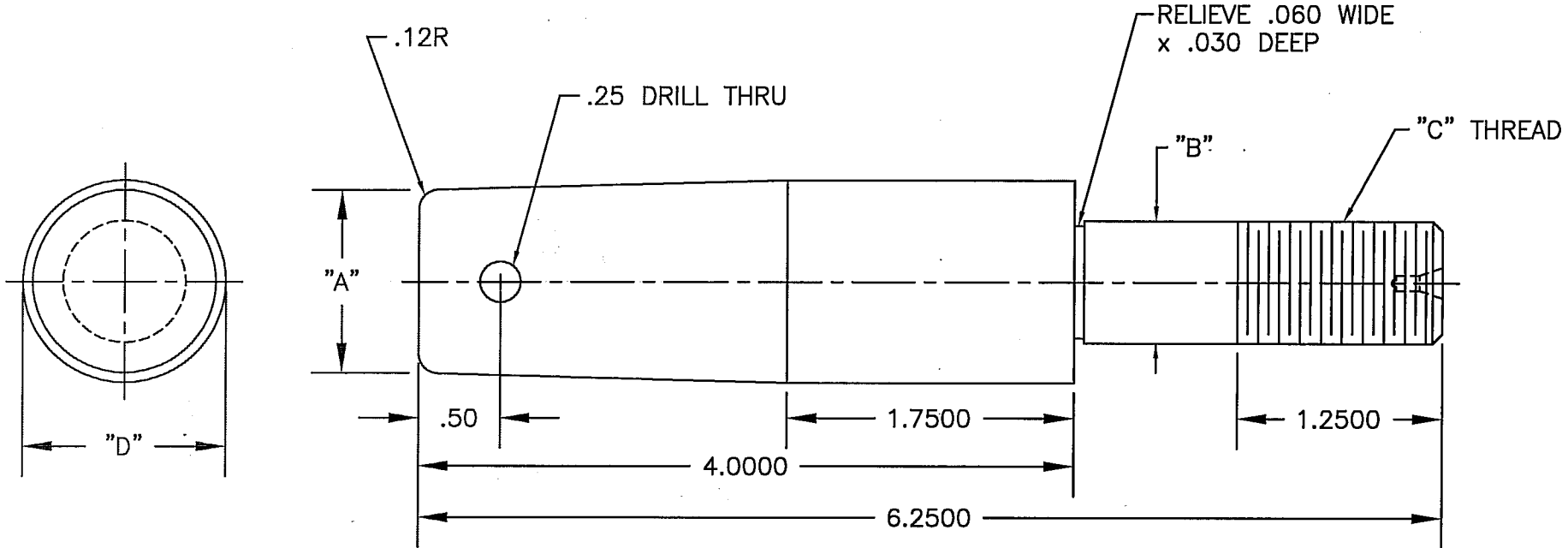
PART NO.	"D"	"A"	"B"	"C"
A005	.615	.38	.375	3/8-24
A006	.865	.62	.625	5/8-18
A007	.990	.87	.625	5/8-18
A008	1.240	1.12	.750	3/4-16

PART NO.	"D"	"A"	"B"	"C"
A005A	.621	.38	.375	3/8-24
A006A	.871	.62	.625	5/8-18
A007A	.996	.87	.625	5/8-18
A008A	1.246	1.12	.750	3/4-16

<b>E</b>	EPIC MACHINE INC.		
	FENTON, MI 48430		
PART NAME			
CORE BOX CLOSING PIN			
DWN.	RW	CHKD. DW	SCALE FULL
			DATE 7/8/97
PART NO. SEE LEGEND		FILE NO. A008	

PART NO.  
SEE LEGEND

LETTER	DATE	REVISION	BY



EPIC MACHINE INC.  
201 INDUSTRIAL WAY  
FENTON, MI 48430  
(810) 629-9400

EPIC MASTER  
DATE: 9-1-99

HT: .58R<sub>c</sub>

HOT BOX

COLD BOX

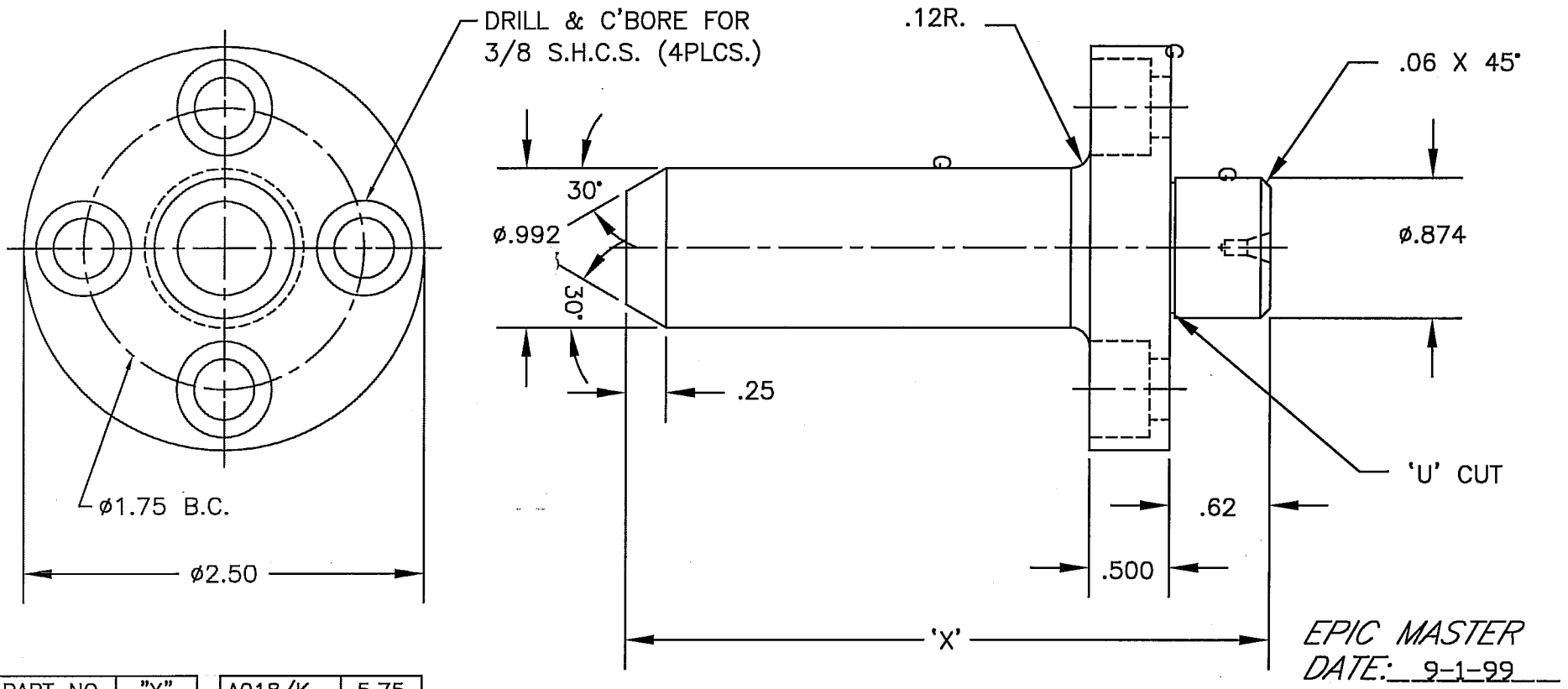
PART NO.	"D"	"A"	"B"	"C"
A009	.865	.62	.625	5/8-18
A010	.990	.87	.750	3/4-16
A011	1.240	1.12	.750	3/4-16
A012	1.240	1.12	.625	5/8-18

PART NO.	"D"	"A"	"B"	"C"
A009A	.872	.62	.625	5/8-18
A010A	.997	.87	.750	3/4-16
A011A	1.247	1.12	.750	3/4-16
A012A	1.247	1.12	.625	5/8-18

E	EPIC MACHINE INC.		
	FENTON, MI 48430		
PART NAME			
CORE BOX CLOSING PIN			
DWN.	RW	CHKD. DW	SCALE FULL
			DATE 7/9/97
PART NO. SEE LEGEND		FILE NO. A011	

PART NO.  
SEE LEGEND

LETTER	DATE	REVISION	BY



EPIC MASTER  
DATE: 9-1-99

PART NO.	"X"	A018/K	5.75
A018/A	4.00	A018/L	6.00
A018/B	4.12	A018/M	3.00
A018/C	4.25	A018/N	3.50
A018/D	4.50	A018/P	9.12
A018/E	4.75	A018/R	3.12
A018/F	5.00	A018/S	6.50
A018/G	5.25	A018/T	6.37
A018/H	5.38	A018/U	6.87
A018/J	5.50	A018/V	8.87

R/C: 58

EPIC MACHINE INC.  
201 INDUSTRIAL WAY  
FENTON, MI 48430  
(810) 629-9400

<b>E</b>	EPIC MACHINE INC.		
	FENTON, MI 48430		
PART NAME			
BLOW PLATE LOCATOR PIN			
DWN.	RW	CHKD.	DW
SCALE		DATE	
FULL		7/16/97	
PART NO.		FILE NO.	
SEE LEGEND		A018-A	

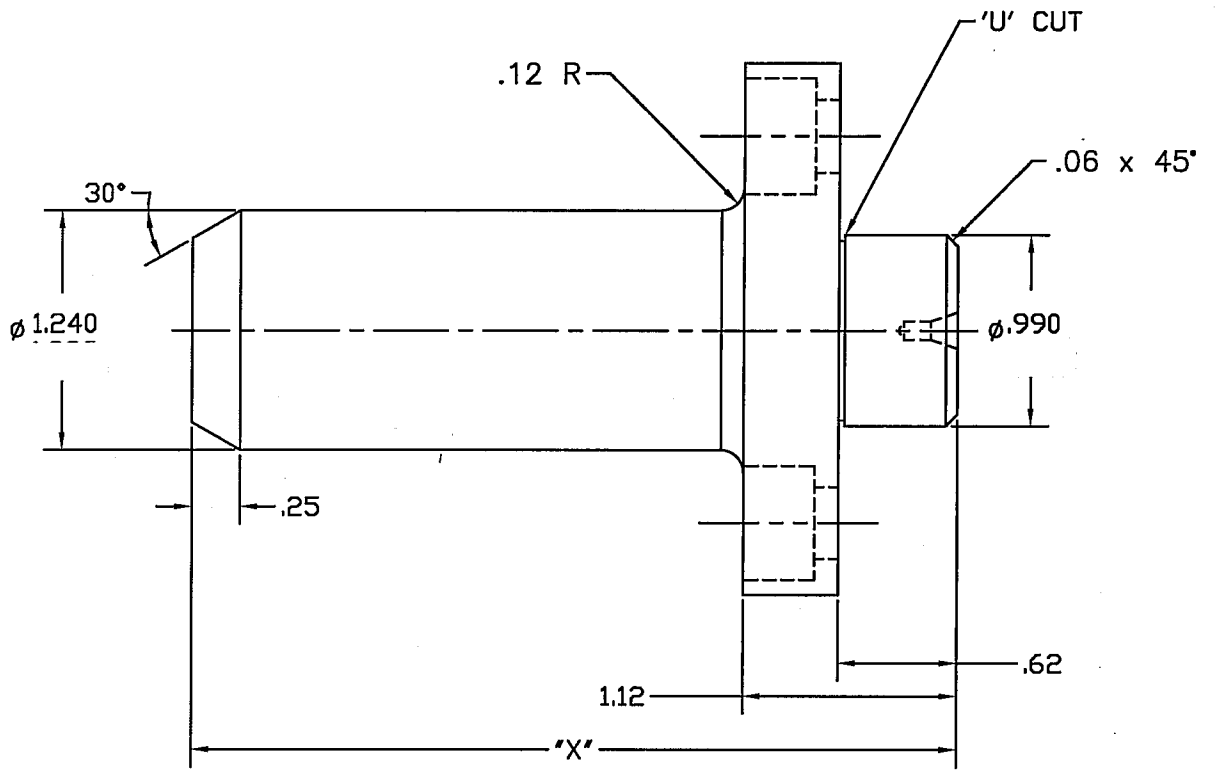
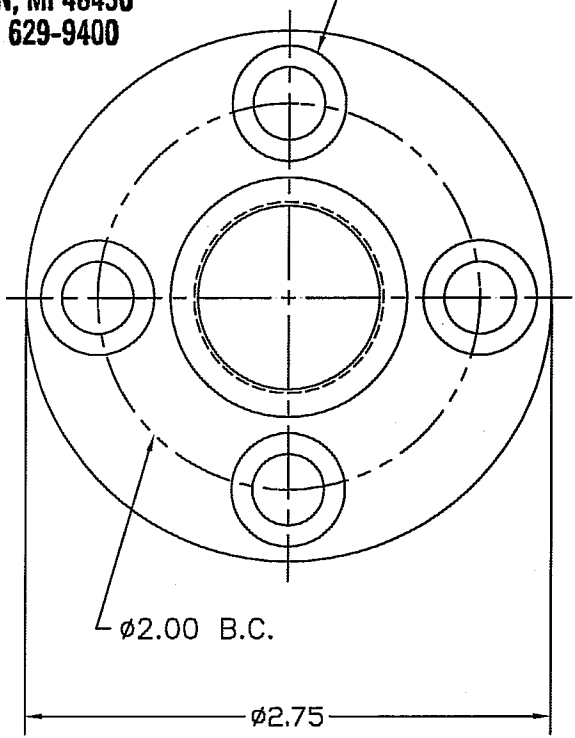
PART NO.  
SEE LEGEND

EPIC MASTER  
DATE: 9-1-99

LETTER	DATE	REVISION	BY

EPIC MACHINE INC.  
201 INDUSTRIAL WAY  
FENTON, MI 48430  
(810) 629-9400

DRILL & C'BORE FOR  
3/8 S.H.C.S. (4 PLCS.)



PART NO.	"X"	A019/E	4.75	A019/LL	6.12	A019/T	7.00
A019/A	4.00	A019/F	5.00	A019/M	2.62	A019/U	7.50
A019/AA	7.25	A019/G	5.25	A019/N	2.75	A019/V	6.25
A019/AE	10.25	A019/H	5.38	A019/P	3.00	A019/W	6.50
A019/B	4.12	A019/J	5.50	A019/Q	3.25	A019/Y	8.00
A019/C	4.25	A019/K	5.75	A019/R	3.50	A019/Z	8.12
A019/D	4.50	A019/L	6.00	A019/S	6.75	SPECIAL	11.65

HT: 58R<sub>c</sub>

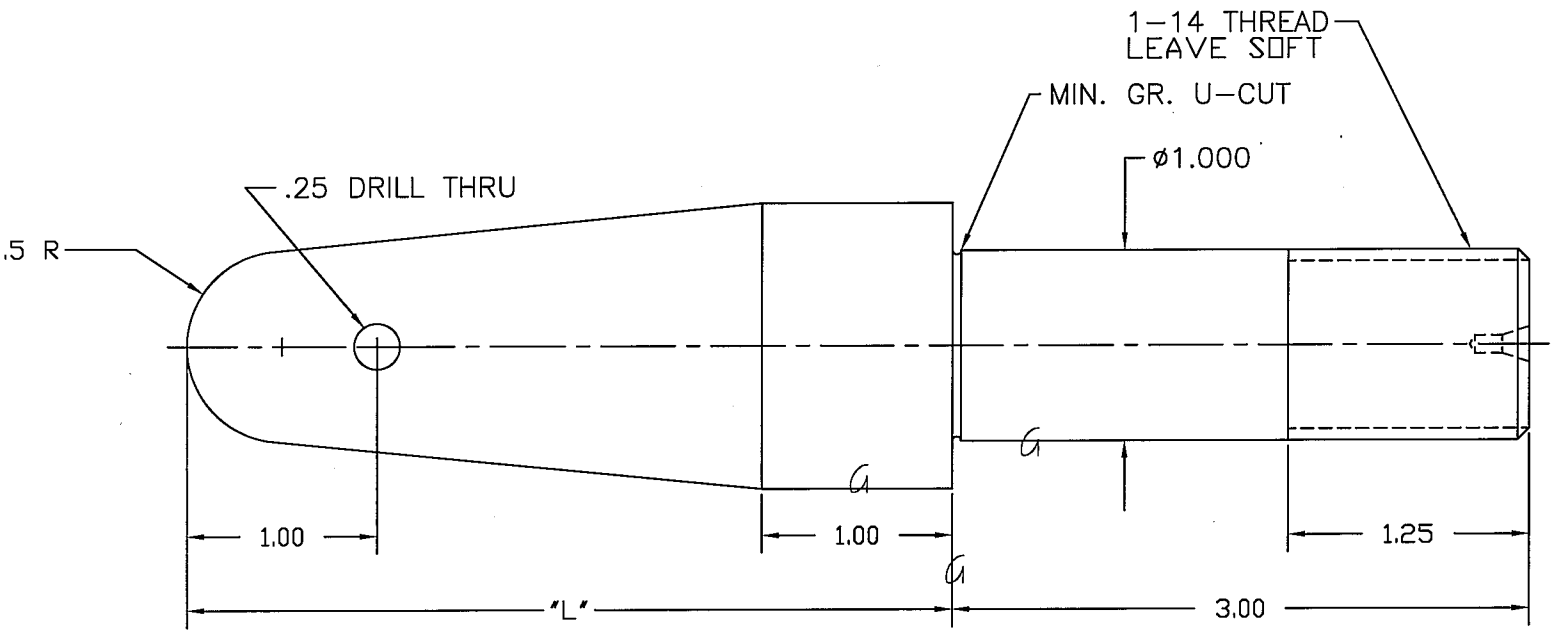
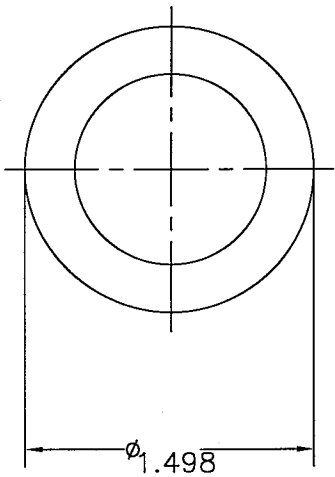
**E** EPIC MACHINE INC.  
FENTON, MI 48430

PART NAME  
BLOW PLATE  
LOCATOR PIN  $\phi 1.25$

DWN. RW	CHKD. DW	SCALE FULL	DATE 7/21/97
PART NO. SEE LEGEND		FILE NO. A019-A	

PART NO.  
**LEGEND**

LETTER	DATE	REVISION	BY



EPIC MASTER  
DATE: 9-1-99

EPIC MACHINE INC.  
201 INDUSTRIAL WAY  
FENTON, MI 48430  
(810) 629-9400

PART NO.	"L"
A240	4.00
A240/A	6.00
A240/B	8.00
A240/C	10.00

MAT'L: 8620  
H,T,: 58-62Rc  
1.000 & 1.500  $\phi$ 'S  
TO BE CONCENTRIC  
WITHIN .001 T.I.R.

**E** EPIC MACHINE INC.  
FENTON, MI 48430

PART NAME		LOCATOR PIN	
DWN. RW	CHKD. DW	SCALE FULL	DATE 7/15/97
PART NO. LEGEND		FILE NO. A240	

TOLERANCES UNLESS OTHERWISE SPECIFIED:				SHEET #
MILLIMETERS		INCHES		XX
1 PLACE $\pm$ 0.3mm	2 PLACE $\pm$ 0.01	3 PLACE $\pm$ 0.003	4 PLACE $\pm$ 0.0005	SHEETS XX
2 PLACE $\pm$ 0.08mm	3 PLACE $\pm$ 0.003	4 PLACE $\pm$ 0.0005		
3 PLACE $\pm$ 0.015mm	4 PLACE $\pm$ 0.0005			